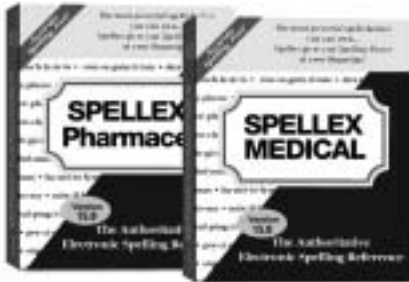




# Introducing the New Spellex Medical 15.0 & Spellex Pharmaceutical 15.0

The Latest Medical Words... at your fingertips!



Now you can own the latest version of the most comprehensive and accurate medical and pharmaceutical spell checkers ever made. Within seconds, you can solve the frustration of having a spell checker which doesn't include many of the latest medical and pharmaceutical terms! (You know...the ones that aren't in your word books or dictionaries either.)

If you've ever tried to spell check medical or pharmaceutical words like **hyperferritinemia**, **Novothyrox**, **uvulopalatopharyngoglossoplasty**, **tetraiodothyroacetic** or hundreds of thousands of other medical and pharmaceutical terms, you know that your spell checker doesn't include thousands of the terms needed by professionals who deal with healthcare issues.

With Spellex, you can quickly solve this problem. No more wasting time flipping through page after page searching for the correct spelling in a dictionary. No more struggling with a speller which doesn't include many of today's newest words. No more stopping to add words to your speller. **And no more embarrassing (and potentially libelous) spelling errors!**

With **Spellex Medical v15** and **Spellex Pharmaceutical v15**, you can check terms from over 67 medical specialties and extensive pharmacologic - therapeutic classifications including medical devices, surgical terms, diseases, medical procedures, treatments, OTC and prescription pharmaceuticals, generic and trade name drugs, new FDA approvals, orphan drugs, investigational drugs, manufacturers, and much more!

## Medical Spelling Power!

The new Spellex Medical v15 correctly spells medical procedures, diseases, treatments, surgical terms, medical slang, lab tests, thousands of drug names, brief word forms, medical devices, eponyms, instrumentation, acronyms, abbreviations, and more! Even Greek letters and diacritical markings such as **Behçet's syndrome**, **Legg-Calvé-Waldenström disease**, **Romaña's sign**, and **déjà éprouvé** are included!

Now covering *over 67 medical specialties*, Spellex Medical v15 includes anatomy, anesthesiology, bacteriology, biology, cardiology, dentistry, immunology, internal medicine, neurology, nursing, oncology, ophthalmology, pathology, psychiatry, radiology, toxicology, urology, and virology, **to name only a few!**

No medical speller is more accurate,... more comprehensive, or more up to date... period!

## Pharmaceutical Spelling Power!

The new Spellex Pharmaceutical v15 contains thousands of terms from the most authoritative and definitive sources of pharmaceutical terminology, including both OTC and prescription pharmaceuticals. This comprehensive speller includes generic and trade name drugs, investigational drugs, chemotherapy drugs, orphan drugs, drug protocols, Latin and Greek terms used in prescription writing, pharmaceutical manufacturers, distributors, and more. Scores of new drugs such as **Xyrem**, **nitazoxanide**, **Strattera**, **Aerobid**, and **Invisalign** are included.

Spellex Pharmaceutical v15 covers extensive pharmacologic-therapeutic classifications including anesthetics, antihistamine drugs, anti-infective agents, antineoplastic agents, autonomic drugs, cardiovascular drugs, central nervous system agents, dental agents, diagnostic agents, enzymes, gastrointestinal drugs, hormones, oxytocics, serums, vaccines, vitamins, and more!

## What Customers Say About Spellex!

*"I am completely satisfied with the information. And your advertising was correct...it is far in advance of the current PDR and latest medical dictionary."*

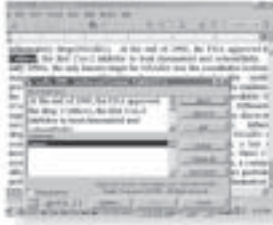
– Karelin Sammann  
PKdesign

*"It paid for itself in time savings within the first two weeks. I'd recommend it to anyone needing accuracy AND speed!"*

– L. Moore  
VA Hospital,  
Tampa, FL

*"It's amazing how much easier doing a transcription from dictation is with Spellex on the computer. It helps me find correct spelling in seconds!"*

– Katherine Mabel



## Simple To Install...and Use!

Spellex works **inside** your Microsoft®, WordPerfect®, or Lotus® spell checker...exactly like your current spell checker, so there's nothing new to learn! No new commands to remember. No training is needed. And no manuals to read. Just type "**Setup**" and Spellex does the rest.

## Assists with Unsure Spelling!

Not sure how to spell a word? Simply type the word the way you think it might be spelled and get a list of all similar sounding choices. Spellex checks both your regular English words and your medical and pharmaceutical words simultaneously. Replace misspelled words with a single mouse click, too!

## Why Spellex?

Spellex brings you the most definitive, up-to-date, and essential terms from the world's most respected reference sources. You no longer have to rely on only one book publisher's paper or electronic dictionary. Spellex unconditionally guarantees you the most accurate, complete, and up-to-date spelling dictionary...**and the best value!**

## Keep Up To Date with SPELL-X-PLUS™

Healthcare professionals know that new medical terms are introduced DAILY – **new diagnostic procedures, new instruments, new medications, new equipment, new techniques, new research terms, new laboratory tests, new clinical drug trials...the list goes on and on!** Many of these terms won't be found in your favorite medical references or medical spellers for years – if at all!

With the **SPELL-X-PLUS** quarterly software update service, you can easily keep your favorite spell checker up to date with the newest words in medicine! **No other medical spell checker brings you this exciting option!**

## Also Available from Spellex:

- **Spellex BIOTECH** – The new comprehensive spell checker covering the disciplines of molecular biology, bioscience, bioinformatics, general biology, organic chemistry, biochemistry, and biophysics.
- **Spellex BOTANICAL** – Correctly spell common and scientific plant names and botanical names as well as plant families, genera, species, and plant diseases.
- **Spellex LEGAL** – Covering all areas of law from Administrative Law to Wrongful Deaths. Includes statutes, citators, Latin words and phrases, and more.
- **Spellex DENTAL** – Includes general and hospital dentistry, oral and maxillofacial surgery, endodontics, periodontics, plus related drugs, equipment, materials, and more.
- **Spellex TECHNICAL** – Covers scientific and engineering terms from Aerospace to Zoology. Includes computer science, chemistry, engineering, geology, and more.
- **Spellex GEOGRAPHICAL** – Correctly spell towns, cities, municipalities, countries, bodies of water, mountains, parks, and more.

### THE SPELLEX GUARANTEE!

Try any Spellex software without risk or obligation for 30 days. If for any reason whatsoever you are not 100% delighted, simply call us for a full refund!

